

-40°C Ultra-low Temperature Freezer

New Upgrade

Stable Performance • High Quality



DW - FL90

Brand New Appearance, the Second Generation of High-quality Product

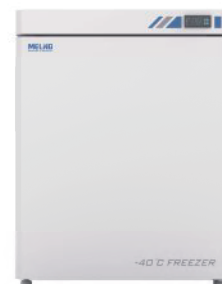
The polyurethane foam door has great thermal insulation performance.

Multiple alarms ensure safety of storage

The freezer has multiple audible & visual alarm functions, such as high temperature/low temperature alarm, door opening/closing alarm, sensor failure alarm, etc. and can guarantee security of samples in a comprehensive way.

Temperature Control

The high-precision computerized temperature control system ensures an adjustable temperature within a range from -20 to -40°C inside the cabinet.





Control Panel

The high-definition digital temperature display can realize a temperature display precision of 0.1°C and is convenient for observation;



Refrigeration System

The compressor supplied by a famous brand and high-efficiency refrigerant R600a can reduce energy consumption to a large extent;



Alarm Upgrading

The high temperature/low temperature alarm, door opening alarm, sensor failure alarm and power outage alarm can ensure security of samples comprehensively;



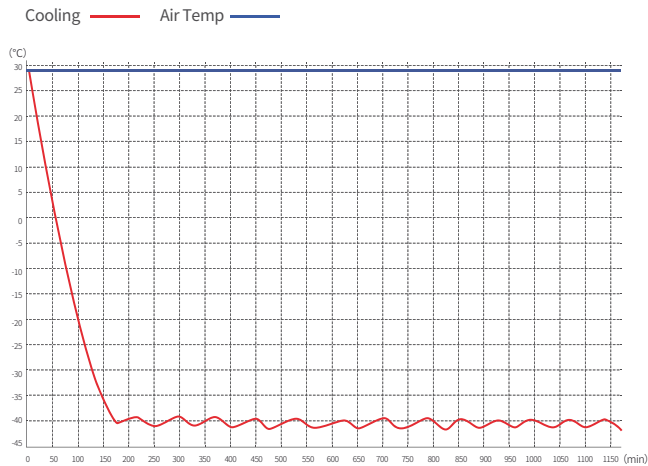
Human-oriented

The invisible door handle can prevent damage during transportation and save space; The 3 drawers are convenient for separate storage of different types of things and can prevent cross influence among various things.

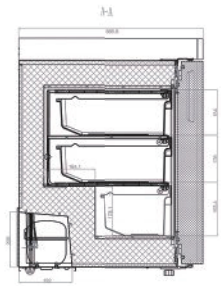
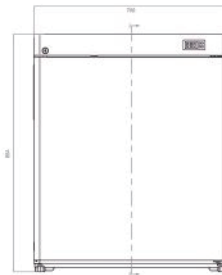
✓ Scope of Application

Suitable for freezing of ice bars and storage of various things needing refrigerated storage such as blood plasma, reagent, etc. Suitable for use in hospitals, clinics, health and disease prevention systems, blood banks, laboratories in colleges & universities, the frozen food industry and catering industry, etc.

🔗 Performance Data / Cooling Curve



📏 External Dimensions



-40°C Low-temperature Medical Freezer	
Model	DW-FL90
Cabinet Type	Upright
Capacity(L)	90
Internal Size(W*D*H)mm	500*485*532
External Size(W*D*H)mm	700*669*854
Package Size(W*D*H)mm	765*735*935
NW/GW(Kgs)	54/60
Performance	
Temperature Range	-20~-40°C
Ambient Temperature	16-32°C
Cooling Performance	-40°C
Climate Class	N
Controller	Microprocessor
Display	Digital display
Refrigeration	
Compressor	1pc
Cooling Method	Direct Cooling
Defrost Mode	Manual
Refrigerant	R290
Insulation Thickness(mm)	100
Construction	
External Material	Powder coated material
Inner Material	Aluminum plate with spraying
Shelves	3(ABS)
Door Lock with Key	Yes
External Lock	Optional
Access Port	1pc. Ø 25 mm
Casters	2+(2 leveling feet)
Alarm	
Temperature	High/low temperature
System	Sensor error
Construction	Door ajar
Electrical	
Power Supply(V/HZ)	220/50
Rated Power(W)	200
Input Power(W)	370
Power Consumption(KWh/24h)	1.69
Rated Current(A)	1.68

*The model, parameters and performance specified in this brochure may be changed without prior notice because of product upgrading.

*There may be differences between the product images shown in this brochure and the actual products. When you are buying any product, please check the actual product.